



About us:

We are a dynamic team with a free, unconventional outlook on power grid design and execution, motivated by the desire to provide high-quality services to our customers.

We aim to provide effective solutions in a very dynamic sector and we do this by listening to our customers' initiatives, concerns and aligning them with legislative guidelines, work ethic and current technological capabilities.

Our team is the basis of our reliability, excellent reputation and originality. Our team members are stimulated by the work climate, where the experience is recognized and eager young minds have an opportunity to learn from the best in the field.

We serve our customers with integrity and promptitude. By doing so, we create an environment in which we can deliver superior electrical engineering services.

We see our customers not only as simple clients, but as valued long-terms partners.



Values:

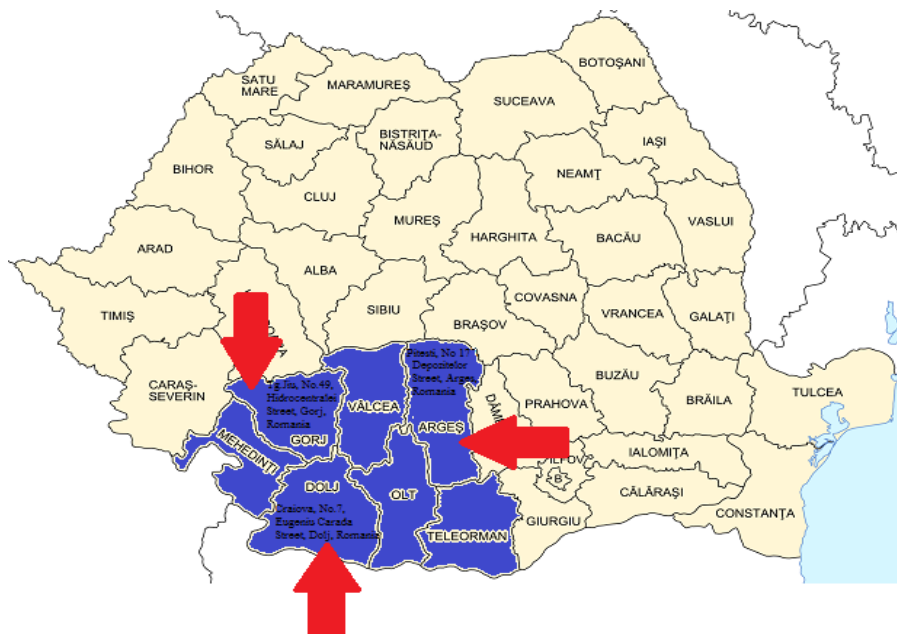
- Integrity
- Performance
- Customer orientation

Vision: to develop and promote modern solutions in the field of electrical energy.

Mission: to provide high quality services to all our customers.

ALM POWER GROUP is headquartered in 7 Eugeniu Carada Street, Craiova, Dolj Country, Romania. As workstation we have three:

- Workstation Craiova: 10i Aviatorilor Street (Craiova Industrial Park), Ghercesti, Dolj Country, Romania
- Workstation Târgu-Jiu: 49 Hidrocentralei Street, Târgu-Jiu, Dolj Country, Romania
- Workstation Pitești: 17 Depozitelor Street, Pitești, Argeș Country, Romania. Due to this geographical position we can cover the entire Oltenia Region and part of Muntenia Region.





Services:

We proudly provide our customers with a full line of commercial and industrial electrical engineering and execution services.

a) Technical design

- Technical/electrical design services for overhead and underground power lines with voltage ranges between 0.4kV and 110kV, distribution lines/cables and transmission substations;
- Designing outdoor/indoor electrical installations for civilian and industrial platforms and buildings;
- Designing protection and measuring installations;
- Ensuring technical/electrical design for Power Factor Correction System (automatic and static).

b) Technical/electrical execution:

- Overhead and Underground Distribution System Development – execution of new Overhead/Underground power distribution lines/cables and execution of required upgrades for these power lines/cables;
- Executing outdoor/indoor electrical installations for civilian and industrial platforms/buildings;
- Inspecting, testing and improving site electrical and lightning protection system to comply with regulatory standards and best practices and written reports with recommendations;
- Aerial/underground electrical line tapping for single-phase and 3-phase, at a nominal voltage of 0.4kV;
- Ensuring execution of power Factor Correction System. Our team is qualified for installing automatic and static system, on accordance with the client's necessities and capabilities.

c) Maintenance, repair and overhaul

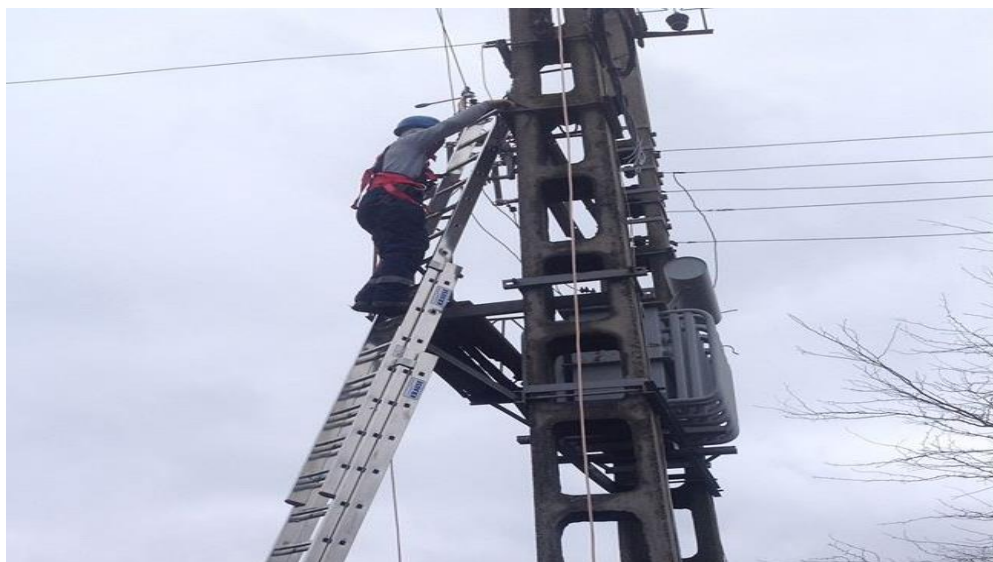
- Ensuring MRO for street lighting equipment, electrical street signalization, temporary festive lighting, ornamental lighting connected to the public lighting equipment and outdoor/indoor electrical installation for civilian and industrial platforms/buildings.
- Ensuring maintenance for Overhead/Underground distribution systems and stationary batteries;

d) Consultancy services:

- Inspecting, testing and improving site electrical and lighting protection system to comply with regulation standards and best practices and written reports with recommendations;
- Issuing official certificates Ground system resistance Testing;

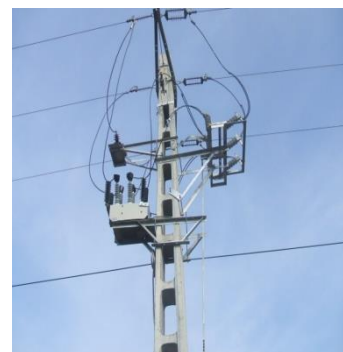
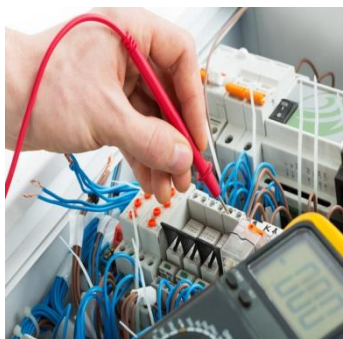


- Providing the clients with specific engineering and technical support for solving problems regarding the preparation of technical design documentation.



Another field we aim to develop is the distribution field. Currently the products we sell are products like:

- Prefabricated substation enclosures;
- Medium voltage switchgear;
- Low voltage distribution panels;
- Equipment for medium voltage overhead power lines;
- Distribution transformers, medium voltage instrument transformers.





Certificates:

ANRE (The Romanian Energy Regulatory Authority) Certificate 9749/10-02-2014

ANRE (The Romanian Energy Regulatory Authority) Certificate 10824/23.03.2015

Certificate SR EN ISO 9001:2008

Certificate SR EN ISO 14001:2005

Certificate SR OHSAS 18001:2008

Certificate SR ISO/CEI 27001:2008

Contact:

You can contact us:

- on this phone number: +(40)371 174040
- on this fax address +(40)372 895898
- on our website: www.almpower.ro

General Director: Sofi-Sabin MARINESCU

Phone: +(40)723 609015

e-mail: sabin.marinescu@gmail.com

